



GAT MONTHLY MEMBERSHIP PROGRESS REPORT

Results as of: 6/30/2023

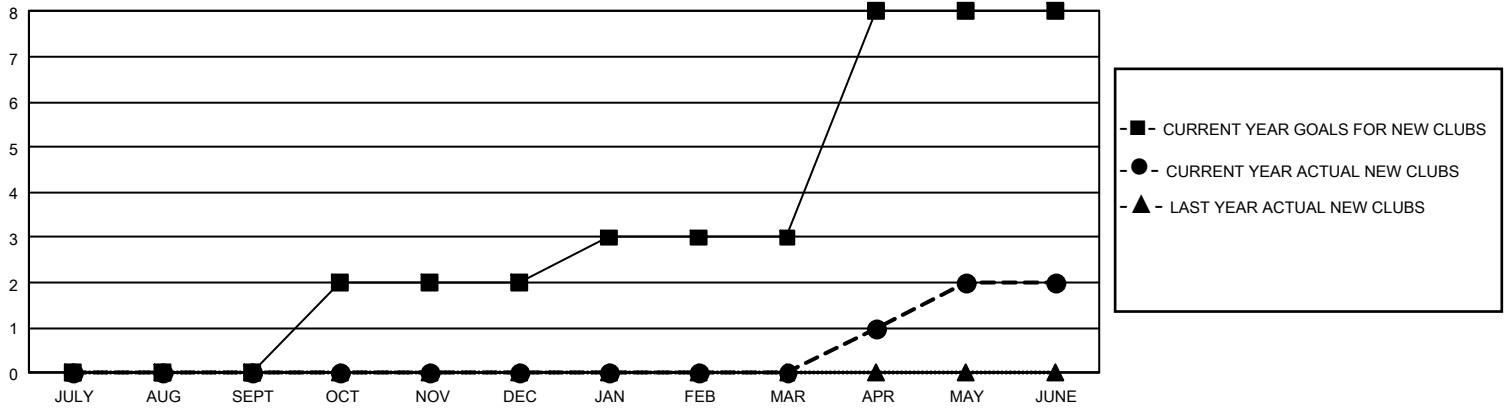
GMT Constitutional Area 2, Group D

REPORT DOES NOT INCLUDE CLUBS IN UNDISTRICTED AREAS.

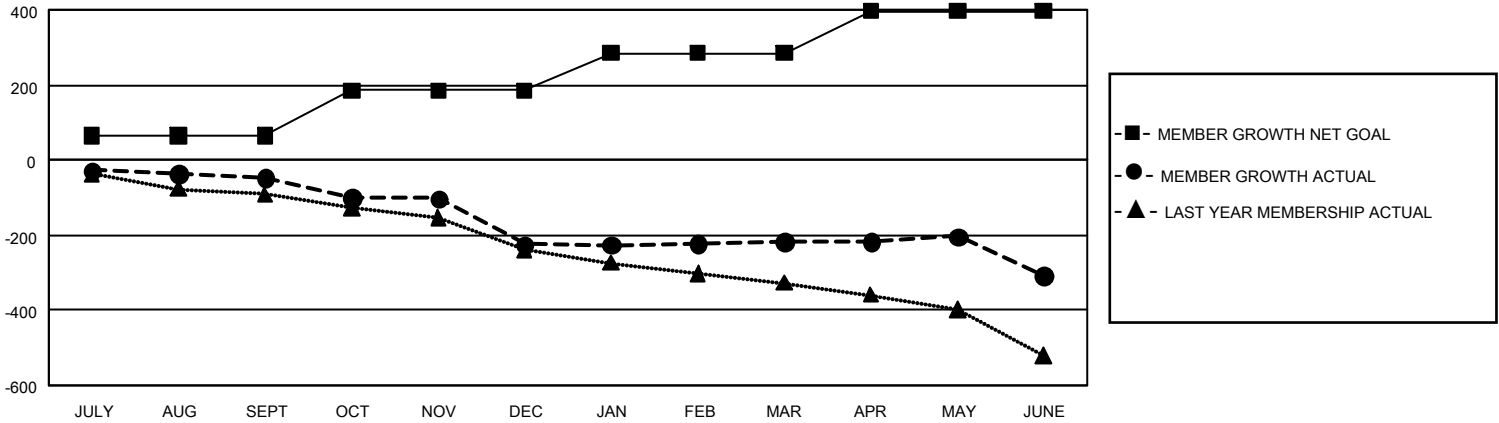
Clubs			
RESULTS FOR 2022-2023			
QUARTER	NEW CLUB GOAL	NEW CLUBS	DROPPED CLUBS
JULY/AUG/SEPT	0	0	1
OCT/NOV/DEC	6	0	1
JAN/FEB/MAR	3	0	2
APR/MAY/JUNE	15	2	8

Members			
RESULTS FOR 2022-2023			
QUARTER	MEMBER GROWTH NET GOAL	MEMBER GROWTH ACTUAL	DROPPED MEMBERS ACTUAL (including transfers)
JULY/AUG/SEPT	65	131	148
OCT/NOV/DEC	120	182	325
JAN/FEB/MAR	100	172	156
APR/MAY/JUNE	111	306	356

GOALS AND ACTUAL NEW CLUBS CUMULATIVE



GOALS AND ACTUAL MEMBERS CUMULATIVE



DROPPED CLUBS: 12	185 CLUBS OF 354 ADDED 1 OR MORE NEW MEMBERS	GENDER DISTRIBUTION	
		MALE 4,606 (70.27%) FEMALE 1,948 (29.72%) NON BINARY 0 (0.00%) PREFER NOT TO ANSWER 1 (0.02%)	
DROPPED MEMBERS		CLICK HERE FOR CUMULATIVE MEMBERSHIP DATA	
DECEASED 114 CLUB CANCELLED 95 OTHER 777 TOTAL 986		TOTAL FAMILY UNIT MEMBERS 1,132 FAMILY MEMBERS PAYING HALF DUES 574	